



**REGIONAL SPECIALISED METEOROLOGICAL CENTRE-TROPICAL CYCLONES, NEW DELHI  
TROPICAL WEATHER OUTLOOK**

**DEMS-RSMC SPECIAL TROPICAL CYCLONES NEW DELHI DATED 11.08.2022**

**TROPICAL WEATHER OUTLOOK FOR NORTH INDIAN OCEAN (THE BAY OF BENGAL AND ARABIAN SEA) VALID FOR NEXT 120 HOURS ISSUED AT 0600 UTC OF 11.08.2022 BASED ON 0300 UTC OF 11.08.2022.**

**BAY OF BENGAL:**

A LOW PRESSURE AREA IS LIKELY TO FORM OVER NORTH BAY OF BENGAL AROUND 13<sup>th</sup> AUGUST, 2022. IT IS LIKELY TO BECOME MORE MARKED DURING SUBSEQUENT 24 HOURS AND MOVE WEST-NORTHWESTWARDS THEREAFTER.

SCATTERED TO BROKEN LOW AND MEDIUM CLOUDS WITH EMBEDDED INTENSE TO VERY INTENSE CONVECTION LAY OVER NORTH ADJOINING CENTRAL AND TENASSERIM COAST. SCATTERED LOW AND MEDIUM CLOUDS WITH EMBEDDED MODERATE TO INTENSE CONVECTION LAY OVER GULF OF MARTABAN & ANDAMAN SEA. SCATTERED LOW AND MEDIUM CLOUDS WITH EMBEDDED WEAK TO MODERATE CONVECTION LAY OVER REST BAY OF BENGAL.

**PROBABILITY OF CYCLOGENESIS (FORMATION OF DEPRESSION) DURING NEXT 120 HRS:**

24 HOURS	24-48 HOURS	48-72 HOURS	72-96 HOURS	96-120 HOURS
NIL	NIL	LOW	MOD	NIL

**ARABIAN SEA:**

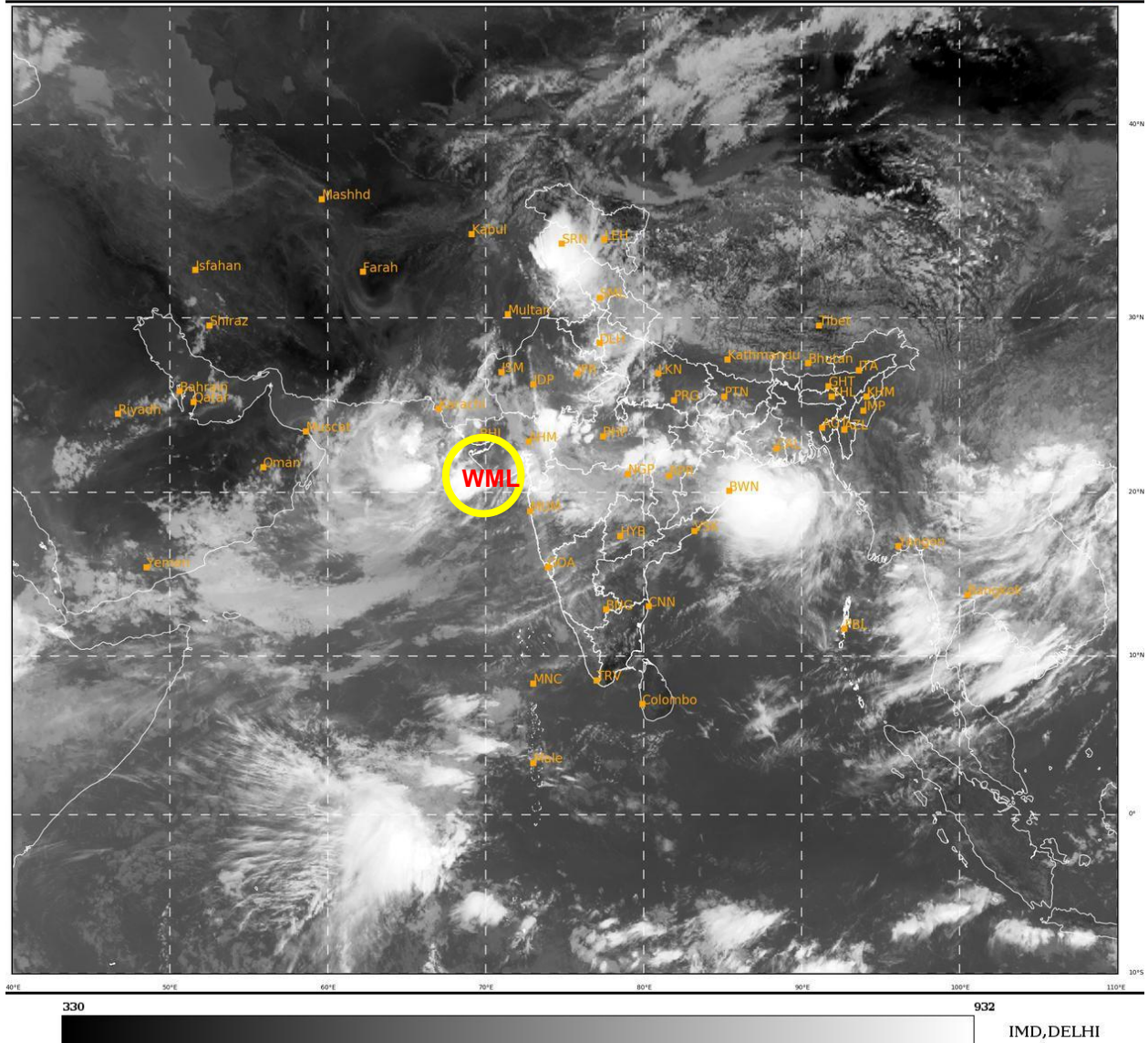
THE WELL MARKED LOW PRESSURE AREA OVER SAURASHTRA & ADJOINING NORTHEAST ARABIAN SEA PERSISTS OVER THE SAME REGION. IT IS LIKELY TO INTENSIFY INTO A DEPRESSION DURING NEXT 48 HOURS OVER NORTHEAST ARABIAN SEA OFF SAURASHTRA & ADJOINING PAKISTAN.

AS PER INSAT 3D IMAGERY AT 0300 UTC, SCATTERED TO BROKEN LOW AND MEDIUM CLOUDS WITH EMBEDDED INTENSE TO VERY INTENSE CONVECTION LAY OVER NORTHEAST ADJOINING EASTCENTRAL ARABIAN SEA & NEIGHBOURHOOD. MINIMUM CTT MINUS 93<sup>o</sup>C.

SCATTERED TO BROKEN LOW AND MEDIUM CLOUDS WITH EMBEDDED INTENSE TO VERY INTENSE CONVECTION LAY OVER NORTHEAST ADJOINING EASTCENTRAL ARABIAN SEA. SCATTERED TO BROKEN LOW AND MEDIUM CLOUDS WITH EMBEDDED MODERATE TO INTENSE CONVECTION LAY OVER NORTHWEST ARABIAN SEA, GULF OF CAMBAY, GULF OF KUTCH. SCATTERED LOW AND MEDIUM CLOUDS WITH EMBEDDED WEAK TO MODERATE CONVECTION LAY OVER REST OF ARABIAN SEA.

**PROBABILITY OF CYCLOGENESIS (FORMATION OF DEPRESSION) DURING NEXT 120 HRS:**

24 HOURS	24-48 HOURS	48-72 HOURS	72-96 HOURS	96-120 HOURS
LOW	MOD	MOD	NIL	NIL



WML:WELL MARKED LOW PRESSURE AREA